

Voters May Now Use Electronic Voting Machines

Registered voters who have disabilities may use a new electronic ballot-marking device in the Sept. 12 Primary and the Nov. 7 General elections in Oswego County.



The voting machines are equipped with a ballot marking device, headset, a "sip and puff" system, and numerical keypad to be used by voters with visual, hearing or physical impairments. Users will receive a series of instructions to navigate them through the system.

Electronic voting machines are programmed to include the election ballot for each election district. Votes are recorded on cards and manually counted by the Board of Elections.

How to Use the New Electronic Voting System

Step 1: Report to Election Inspectors

First, you will be asked to provide your name and address to the Election Inspectors. If you're voting in a Primary Election, you will be asked the party ballot of your choice. You will be asked to sign the appropriate registry certifying that you are a registered voter of that district and qualified to vote in the election.

If you are eligible to vote, you will be given a blank paper ballot, an envelope, and a plastic voter card. The card contains the offices that you are eligible to vote on. It does not contain any information about your identity. You will be directed to an available voting booth.



Step 2: Insert Plastic Card into Machine

Place the plastic voter card, with the arrow facing up, into the slot on the bottom right side of the machine.



Step 3: Insert Paper Ballot



Place paper ballot into ballot printer slot at the top of the machine.

(Continued on reverse side.)

Voting Instructions *(Continued)*

Step 4: Use the Stylus to Get Started



Read the instructions on the screen. Then touch the “Begin Voting” box with the stylus tool.

Step 5: Select Your Choices



You are now ready to vote. The ballot for your election district will be displayed on the screen. Use the stylus to select the candidates of your choice. To cancel a

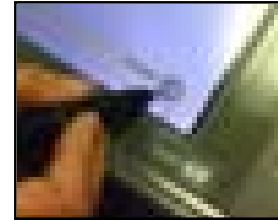
selection, touch the screen again in the same area. Continue until you have finished voting.

To cast a “Write-In” vote, select “Write-In” as a choice. A keyboard will appear on the screen. Type in the candidate’s name by selecting letters with the stylus. Then touch “Accept Write-In and Return.”

Review your choices. To make changes, touch the “Start Over” arrow with the stylus.

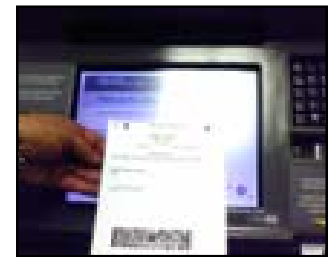
Step 6: Print Your Ballot

When you have finished voting, touch the “Print Ballot” arrow on the final screen.



Step 7: Verify Your Ballot

Your votes will be printed on the paper ballot that you inserted in the top of the machine. The paper ballot



shows a series of numbers that correspond to your selections, as well as a bar code. You can verify your vote by comparing the numbers on the printed ballot with numbers on a chart that is posted near the voting machine. You may also check your selections by placing the section with the bar code under the scanner that is on the voting booth. If you wish to make changes, return the ballot and the plastic voter card to the Election Inspector.

Step 8: Give Your Ballot and the Plastic Card to the Election Inspector



The last step is to place your ballot in the envelope that you received from the Election Inspector. Remove the plastic card from the voting machine. Return the envelope and the card to the Election Inspector. It will be deposited in the ballot box and counted by the Board of Elections.

(9/06)