

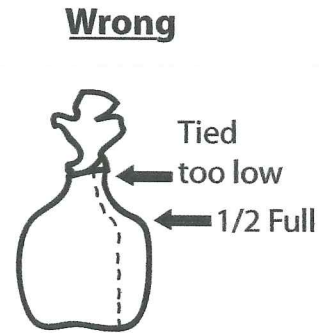
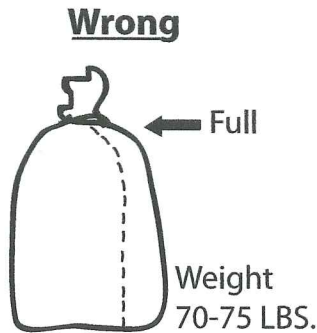
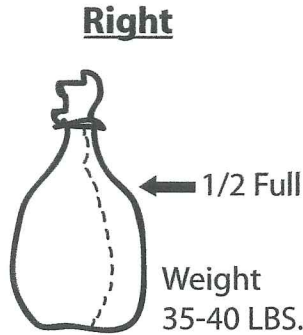
How To Construct A Sandbag Emergency Levee



US Army Corps
of Engineers®

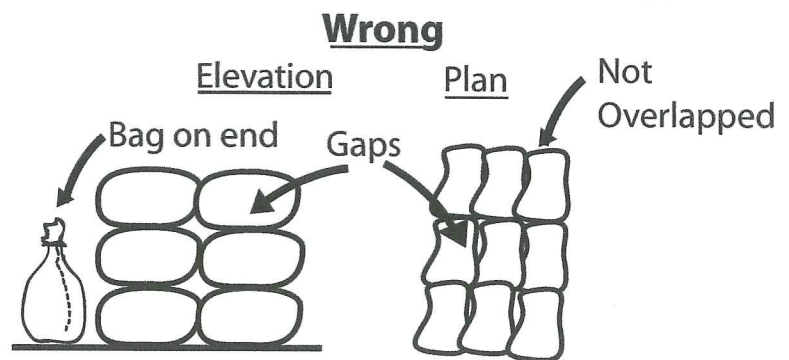
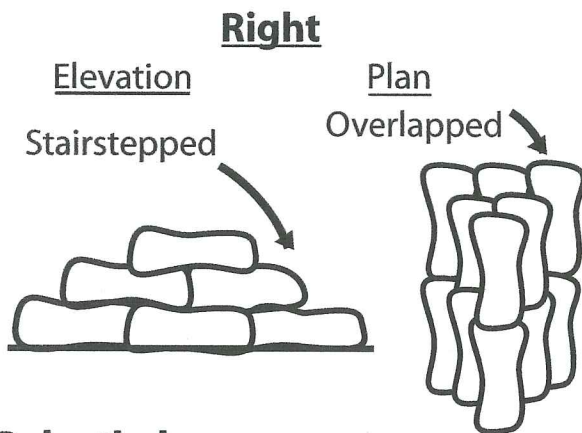
How To Fill Sandbags:

Fill sandbags 1/2 to 2/3 full, tie at top so bag will lay flat when put in place.
(Overfilled bags leave gaps in levee allowing water to seep through.)



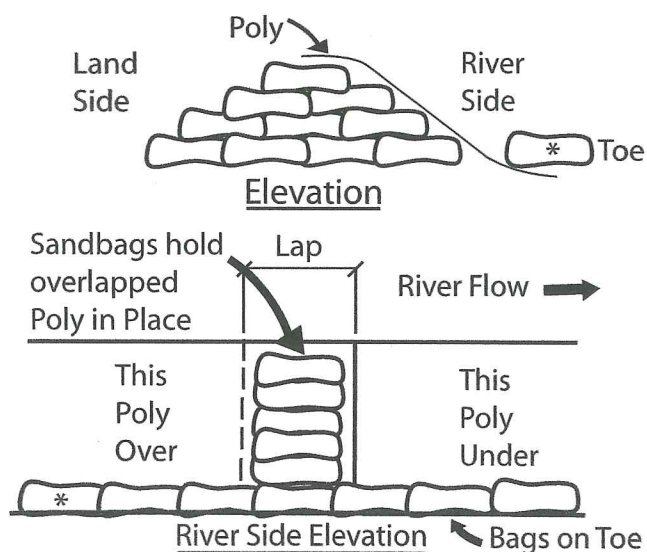
Placing Sandbags:

Sandbags should be placed flat on ground, overlapped, tamped into place, and stairstepped.



Polyethylene:

Polyethylene (poly) comes in rolls 20 ft. wide and 100 ft. long. It's used to wrap sandbag levees to prevent seepage. Poly should be placed on downstream portion of levee first, then worked upstream with a two to three foot overlap. Poly is held in place with sandbags.



Estimated number of sandbags and tons of sand per linear foot of emergency levee. Multiple these numbers by the number of feet of levee to be constructed.

Height in Feet	No. Bags Required	Tons of Sand
1	5	0.10
2	10	0.20
3	21	0.50
4	36	0.75
5	55	1.10

Five feet is the practical limit of a sandbag levee. If a higher levee is needed, alternate means of construction should be considered.

Note: Preferred levee limit is 3 feet high.